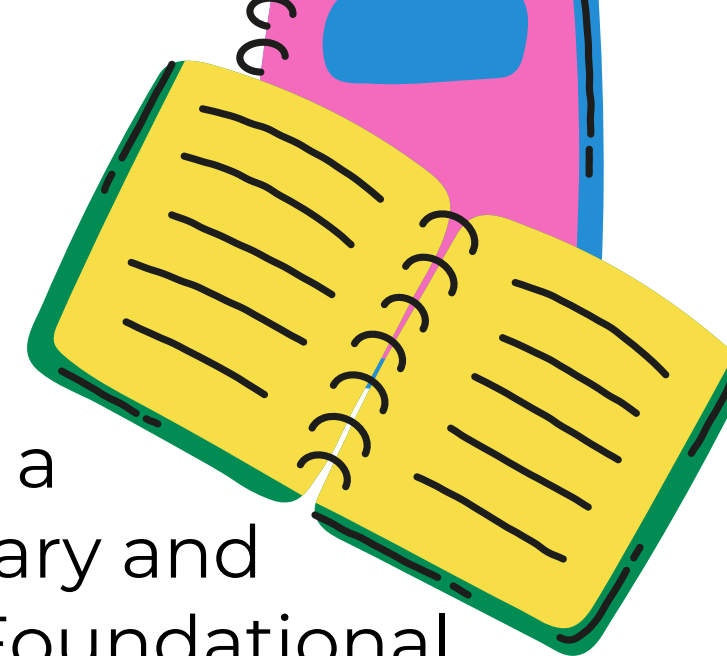
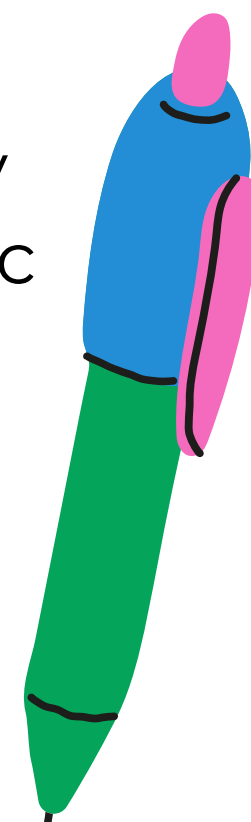


READING SUCCESS PLANS (RSP)



Missouri statute Section 167.645, RSMo (SB 681) requires school districts to conduct a foundational reading assessment as well as a dyslexia screener annually. The Missouri Department of Elementary and Secondary Education (DESE) has approved IReady as a Missouri Foundational Reading Assessment and dyslexia screening tool.

Missouri's Foundational Reading Assessment helps identify students who may have some reading difficulties. Students are assessed in the areas of phonemic awareness, phonics, vocabulary, fluency, and comprehension using i-Ready. The results of the assessment will help identify students who are in need of a Reading Success Plan.



If students are identified as at risk or having substantial reading deficits, a Reading Success Plan will be created to identify areas to improve in. This is a detailed plan on how we will support students in the area of reading in the classroom and/or reading intervention groups. Once identified, teachers and reading interventionists can provide instructional support targeted to student needs, monitor student progress, and adjust instruction as needed.

1

FALL DIAGNOSTIC

Chillicothe R-II students in Grades 1-5 take the i-Ready Reading Diagnostic (Kindergarten is assessed in December)

2

READING PLAN

Teachers determine which students need a plan based on the data from i-Ready and other assessments.

3

CONFERENCES

If a student is receiving a Reading Success Plan, families will receive a copy of it, along with the i-Ready data, at parent teacher conferences. If a kindergarten student is found to be at-risk on the winter benchmark, families will be notified in January.

4

READING INTERVENTION

Students with a RSP will receive targeted intervention in the areas of greatest need. Progress will be communicated to parents at least twice quarterly throughout the school year.

5

EXIT OF RSP

A student's plan will be updated each year. Once a student can function without any additional support and reaches reading goals meeting benchmark on two consecutive i-Ready assessments, parents will be notified that their child will discontinue the RSP.

FREQUENTLY ASKED QUESTIONS FOR PARENTS

HOW DID MY CHILD QUALIFY FOR AN RSP?

ALL STUDENTS TOOK THE IREADY ASSESSMENT IN SEPTEMBER. A COMBINATION OF IREADY SCORES, LEXILE LEVEL, AND FLUENCY TASK SCORES WERE USED TO DETERMINE IF AN RSP WAS NEEDED.

WHO WILL BE INVOLVED IN CREATING MY CHILD'S RSP?

THE CLASSROOM TEACHER, ADMIN, AND READING INTERVENTIONISTS WILL WORK TOGETHER TO CREATE A PERSONALIZED PLAN FOR YOUR CHILD AND WILL HAVE IT READY TO SHARE AT PARENT-TEACHER CONFERENCES AT THE END OF OCTOBER.

WHAT CAN I DO TO HELP MY CHILD NOW?

WORK WITH YOUR CHILD DAILY TO COMPLETE WEEKLY DECODING & SIGHT WORD HOMEWORK
READ TOGETHER WITH YOUR CHILD TO INCREASE YOUR CHILD'S VOCABULARY & LANGUAGE COMPREHENSION
ATTEND SCHOOL LITERACY EVENTS AND VISIT THE LIVINGSTON COUNTY LIBRARY.

HOW LONG WILL MY CHILD HAVE THIS PLAN?

THIS WILL BE AN ONGOING PLAN FOR THE ENTIRE SCHOOL YEAR. WE WILL MONITOR PROGRESS AT LEAST TWICE QUARTERLY TO CHECK YOUR CHILD'S GROWTH.

IF A STUDENT REACHES THEIR LEARNING GOALS, IT IS POSSIBLE FOR THEM TO EXIT THEIR READING PLAN. HOWEVER, THEY MAY ONLY EXIT THEIR RSP IF THEIR PROGRESS MONITORING ASSESSMENTS SHOW THAT THEY HAVE MASTERED THOSE SKILLS AND THEIR SPRING DIAGNOSTIC PROVES THIS MASTERY.

DOES THIS MEAN MY CHILD WILL BE GETTING READING INTERVENTION SERVICES?

THE STUDENT'S READING SUCCESS PLAN WILL BE FULFILLED BY THE CLASSROOM TEACHER THROUGH WHOLE AND SMALL GROUP TARGETING FOCUSED SKILLS. NOT ALL STUDENTS ARE PULLED FROM THE CLASSROOM.

WHAT CAN I DO AT HOME TO HELP MY CHILD AT HOME?

- READING ACTIVITIES FOR PARENTS AND CAREGIVERS: [HTTPS://TINYURL.COM/YWTU7S7S](https://tinyurl.com/ywtu7s7s)
- [HTTPS://IMPROVINGLITERACY.ORG/FAMILY](https://improvingliteracy.org/family)
- READING ROCKETS READING ADVENTURE PACKS: [HTTPS://TINYURL.COM/59E2XUBH](https://tinyurl.com/59E2XUBH)

*CHILLICOTHE SCHOOL DISTRICT 10/23