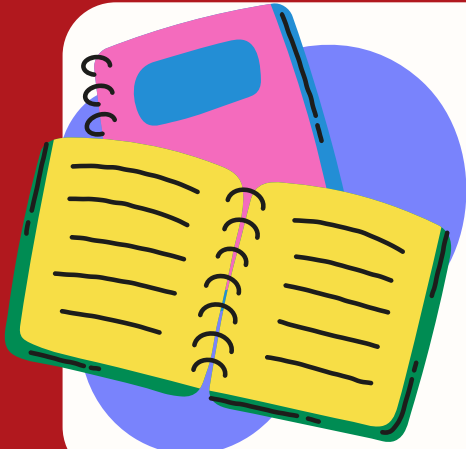


# Clinton Elementary



## State Testing is Near!



### Dates:

March 6, 2024-Writing

April 16, 2024- Reading

April 17, 2024- Math

April 18, 2024- Science

### How You Can Help!

1. Make sure your child gets a good night's sleep.
2. Encourage your child to eat a healthy breakfast.
3. Make sure your child is on time for school.  
(7:45a.m.)
4. Encourage your child to do their best.



### What is Atlas?

Atlas is short for Arkansas Teaching & Learning Assessment System. Arkansas law requires all public school students shall participate in a statewide program of educational assessments per Ark. Code Ann. §§ 6-15-419, 6-15-433, 6-15-2009. The ATLAS end-of-year summative assessment will be used to assess all Arkansas public school students in grades 3-8 in the content areas of English Language Arts (ELA), mathematics, and science. All students will be required to participate in ATLAS 3-10 summative unless they qualify for an alternate assessment.

### ATTENTION!!!

Please complete this survey to help us better plan for the assessment.

