

ADDENDUM ONE

Project No.: **24-006**

Date: **March 22, 2024**

Subject: **CHANGES to the BIDDING DOCUMENTS**

Project: **RENOVATION PROJECT FOR
ORANGEVILLE CUSD #203
ORANGEVILLE, ILLINOIS**

Bids Due: **11:00AM, WEDNESDAY, APRIL 3, 2024**

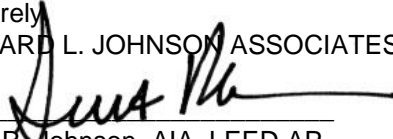
From: **ARCHITECT: RICHARD L. JOHNSON ASSOCIATES, INC.
4703 CHARLES STREET
ROCKFORD, IL 61108**

To: **ALL PROJECT DOCUMENT HOLDERS**

Please reproduce this Addendum as needed, and attach to the Project Manuals for the above project.

Bidders shall indicate receipt of this and all Addenda in the space provided on the Bid Form. Failure to do so may be sufficient cause to reject the bid.

Sincerely,
RICHARD L. JOHNSON ASSOCIATES, INC.



Scott R. Johnson, AIA, LEED AP

This Addendum consists of:
Pages 1 thru 2.
Pre-Bid Meeting Minutes – 2 pages.
Pre-Bid Attendance Record – 1 page.
Revised 24" x 36" Drawing A105

NOTE: Wherein this Addendum conflicts with the original Project Manual and Drawings, this Addendum shall govern.

CHANGES to the PROJECT MANUAL

1. GENERAL ITEMS

- 1.1. See attached contractor sign in sheet.
- 1.2. See attached pre-bid meeting minutes.
- 1.3. General Contractor will be responsible to field verify all existing doors and frame conditions prior to completing shop drawing submittals for the project.
- 1.4. The terrazo flooring patch shall be stone polished.

CHANGES to the DRAWINGS

2. DRAWING A105

- 2.1. Head Detail H5 – See added note to paint the exposed cmu wall after the existing frame is removed under Alterante Bid #1.

END ADDENDUM NUMBER 1

**PRE-BID MEETING NOTES
RLJA No. 24-006
Orangeville CUSD #203
Renovation Project**

PRE-BID DATE & TIME: Thursday, March 21, 2024 @ 11:00am

A. Items Discussed

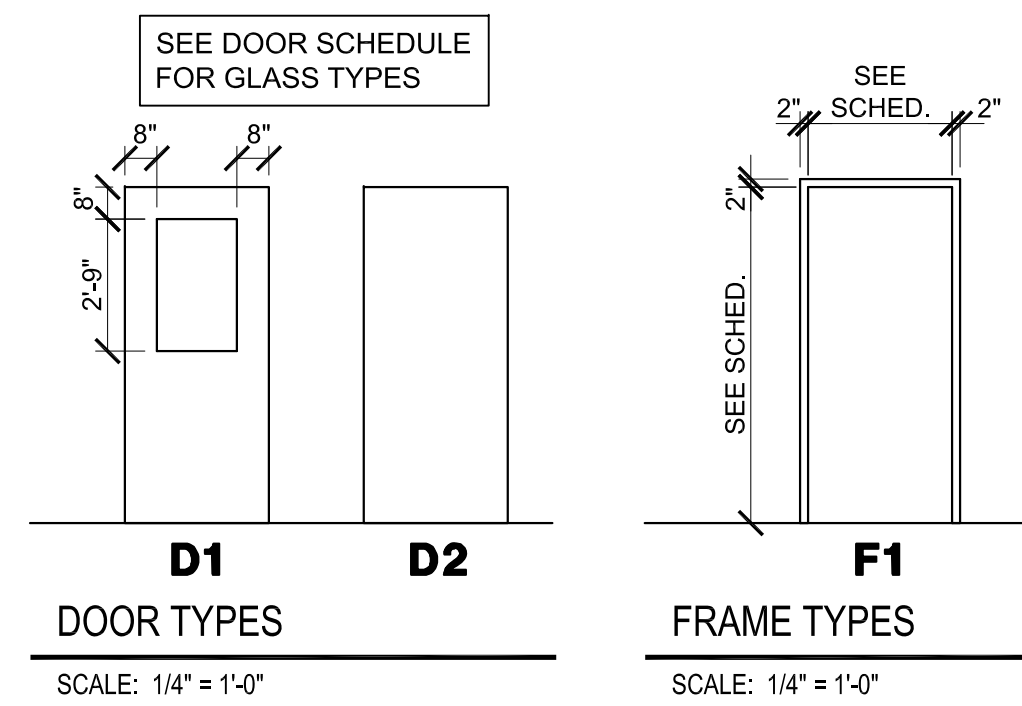
1. Meeting Sign-Up Sheet was passed around to attendees.
2. Bids Due - Wednesday, April 3, 2024 at 11:00am at Orangeville School.
3. The materials used on the project are Tax Exempt.
4. Bid RFI Procedure – Email preferred – Emails to be sent to Scott Johnson at sjohnson@rljarch.com.
5. 5% Security must accompany the Bid.
6. 100% Performance & Payment Bond will be required for the project.
7. The building permit will be obtained by the Owner/Architect thru the Regional Office of Education.
8. The project will be bid out to General Contractors under one contract. Work is included under Base Bid and Alternate Bid #1. Alternate Bid #1 is to replace existing door frames.
9. Any summer activities in the school will not affect the construction areas.
10. Contractors have 24 hours after the bid opening to submit their subcontractor list.
11. There are no unit prices as part of the project.
12. Contractors can tap off the existing building's electrical and water services for construction purposes.
13. Contractors can use existing toilets in the school.
14. Construction meetings will be held as needed. General Contractor to run the meetings, take meeting notes and distribute.
15. All workers are required to complete the criminal background check including fingerprinting. A list of all contractors from each contractor shall be submitted to the Owner. The Contractor shall pay for

these costs. Background checks will need to be completed at the Stephenson County ROE or the jail.

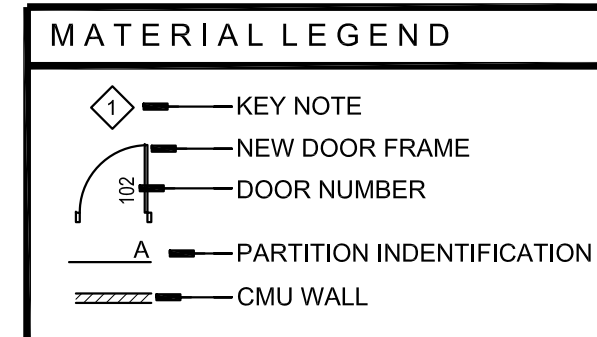
16. The successful contractor shall submit a Schedule of Values and Project Schedule within 3 weeks after being awarded the project.
17. The General Contractor needs to have a designated foreman on site as required to properly coordinate all work.
18. Mark the number of addendum you receive on the bid form.
19. Faxed or emailed bids will not be accepted. If bids are mailed, let the Architect know so they can be looking for it.
20. Final cleaning on the interior shall be by the General Contractor.
21. If a Contractor wants to make an additional site visit, please contact Willy Guy at 815-291-7253.
22. General Contractor shall provide dumpsters as required for the project.
23. Prevailing wages are required for this project.
24. Verify with the Owner if they want any doors that have been removed prior to getting rid of them.
25. The schedule for the project is as follows.:

Board Award	April 8, 2024
Start Construction	June 6, 2024.
Substantially Complete	September 13, 2024.
Teachers Back	August 16, 2024
Students Back	August 21, 2024
26. Contractor to provide a plywood temporary dust enclosure around the toilet room renovation area.

END OF MEETING NOTES



ABBREVIATIONS	
ACT	ACOUST. CEILING TILE SYSTEM
CMU	CONCRETE MASONRY UNIT
EXTG	EXISTING
GL	GLASS
HM	HOLLOW METAL
PR	PAIR
PT	PAINT
RB	RUBBER BASE
SG	SINGLE
WD	WOOD

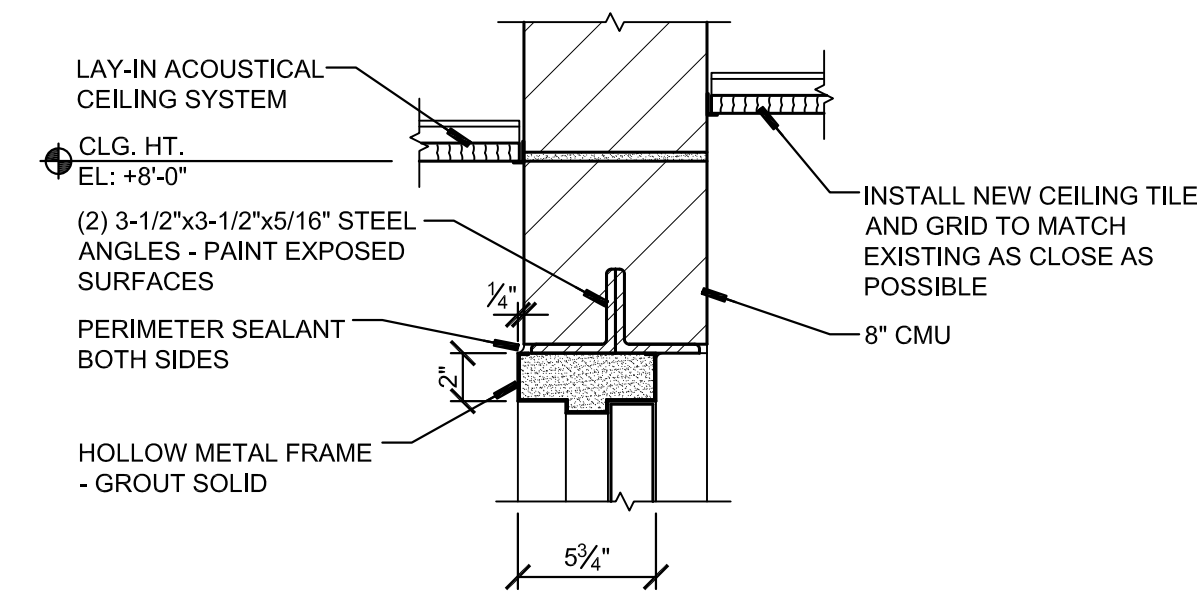


GLASS TYPES	
GL-1	5/16" FIRE RATED SAFETY GLASS

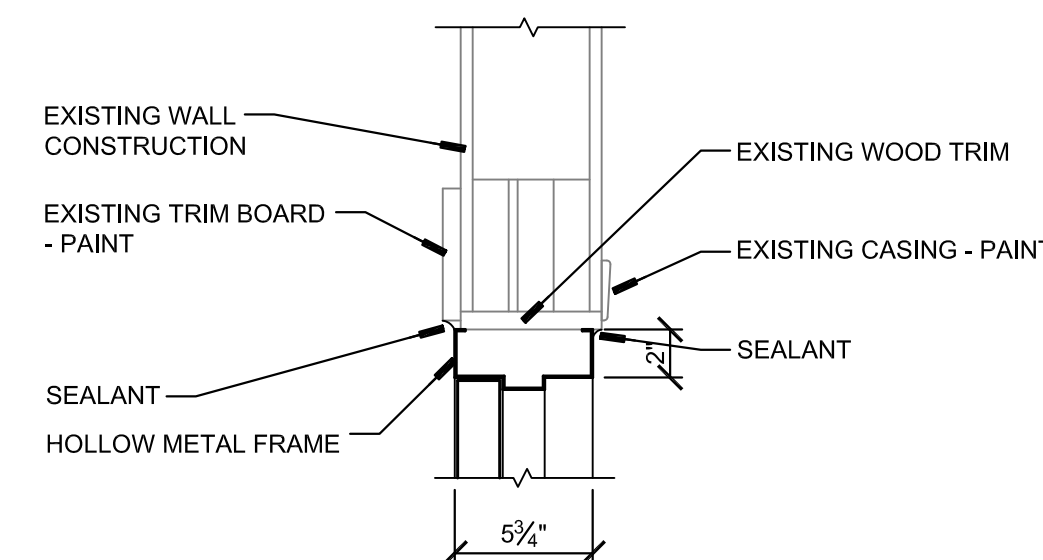
SEE SPECIFICATIONS FOR GLASS TYPES

DOOR SCHEDULE - BASE BID															ALTERNATE BID #1							
DOOR NO.	DOORS			DOOR TYPE			FRAMES		GLAZING		DETAILS					DOOR NO.	FRAMES		DETAILS			
	SG/PR	WIDTH	HEIGHT	THICK	MTL	ELEV.	MTL	ELEV.	DOOR	FRAME	HEAD	JAMB	SILL	HDWR. GROUP	LABEL		REMARKS	MTL	ELEV.	HEAD	JAMB	SILL
B01	PR	2'-6"	7'-0"	1-3/4"	HM	D1	EXTG	-	GL1	-	-	-	-	05	1 HR	NOTE 2	B01	HM	F1	H3	J5	-
101	PR	2'-9"	7'-0"	1-3/4"	HM	D1	EXTG	-	GL1	-	-	-	-	01	3/4 HR	NOTE 2	101	HM	F1	H4	J6	-
102	PR	2'-6"	7'-0"	-	EXTG	-	EXTG	-	-	-	-	-	-	02	3/4 HR	NOTE 1						
103	PR	2'-6"	7'-0"	-	EXTG	-	EXTG	-	-	-	-	-	-	02	3/4 HR	NOTE 1						
104	PR	3'-6"	7'-0"	1-3/4"	HM	D1	EXTG	-	GL1	-	-	-	-	01	3/4 HR	NOTE 2	104	HM	F1	H3	J5	-
105	PR	4'-0"	7'-2"	1-3/4"	HM	D1	EXTG	-	GL1	-	-	-	-	01	3/4 HR	NOTE 2	105	HM	F1	H5	J7	-
106	PR	2'-6"	7'-2"	1-3/4"	HM	D1	EXTG	-	GL1	-	-	-	-	04	1 HR		106	HM	F1	H3	J8,J9	-
107	PR	3'-0"	7'-2"	1-3/4"	WD	D1	EXTG	-	GL1	-	-	-	-	03	3/4 HR		107	HM	F1	H6	J10	-
108	PR	3'-0"	7'-2"	1-3/4"	HM	D1	EXTG	-	GL1	-	-	-	-	04	1 HR		108	HM	F1	H5	J7	-
109	SG	3'-0"	7'-2"	1-3/4"	WD	D2	HM	F1	-	-	H1	J1,J2	-	06	-							
110	PR	3'-0"	7'-2"	1-3/4"	HM	D1	EXTG	-	GL1	-	-	-	-	04	1 HR		110	HM	F1	H5	J7	-
111	PR	1'-8 3/4"	6'-10"	1-3/4"	HM	D2	HM	F1	-	-	H2	J3,J4	-	07	3/4 HR							
201	PR	3'-0"	7'-2"	1-3/4"	HM	D1	EXTG	-	GL1	-	-	-	-	01	3/4 HR	NOTE 2	201	HM	F1	H5	J7	-
202	PR	3'-0"	7'-2"	1-3/4"	HM	D1	EXTG	-	GL1	-	-	-	-	01	3/4 HR	NOTE 2	202	HM	F1	H3	J5	-
203	PR	3'-0"	7'-2"	1-3/4"	HM	D1	EXTG	-	GL1	-	-	-	-	04	3/4 HR		203	HM	F1	H5	J7	-
204	PR	3'-0"	7'-2"	1-3/4"	HM	D1	EXTG	-	GL1	-	-	-	-	04	3/4 HR		204	HM	F1	H5	J7	-

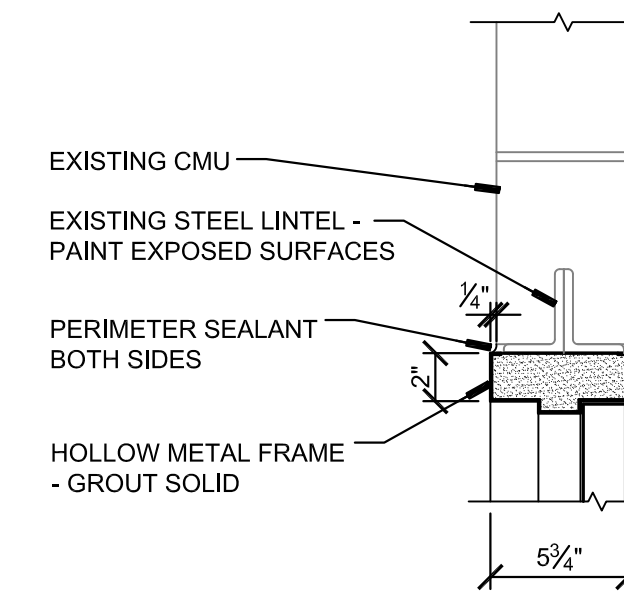
- GENERAL NOTES:
- FILL HOLES IN EXISTING HOLLOW METAL FRAMES.
 - PAINT EXISTING HOLLOW METAL FRAMES BOTH SIDES.
 - DOOR SIZES ARE +/-, VERIFY IN FIELD.
 - PAINT NEW HOLLOW METAL FRAMES BOTH SIDES.
- NOTES:
- REMOVE EXISTING HARDWARE FROM EXISTING DOOR, MODIFY HEAD OF FRAME AS REQUIRED TO ACCEPT LOCKING BOLT.
 - REMOVE EXISTING MAGNETIC HOLD OPEN ARM FROM DOOR, SALVAGE AND REINSTALL ON NEW DOOR, MODIFY HEAD OF FRAME AS REQUIRED TO ACCEPT LOCKING BOLT.



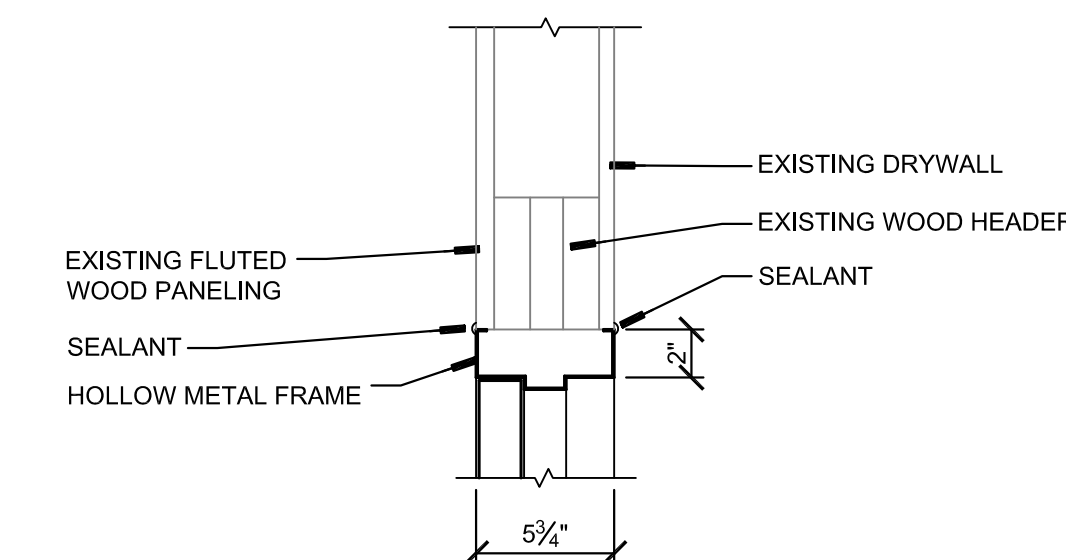
H1 HEAD DETAIL
SCALE: 1-1/2"=1'-0"



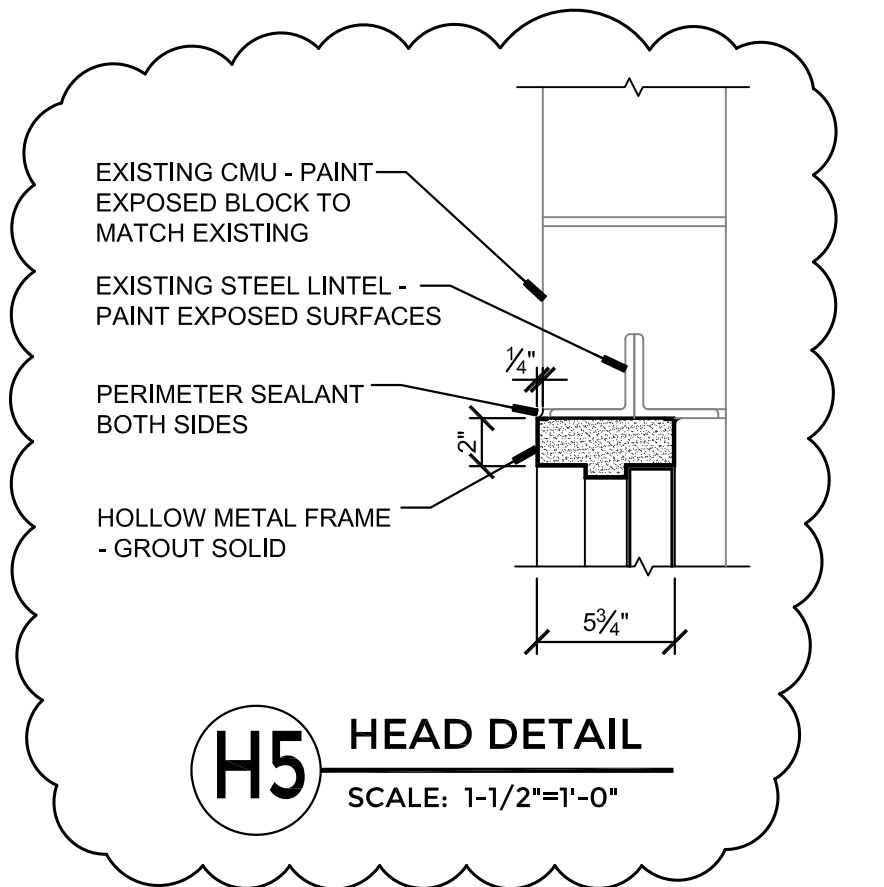
H2 HEAD DETAIL
SCALE: 1-1/2"=1'-0"



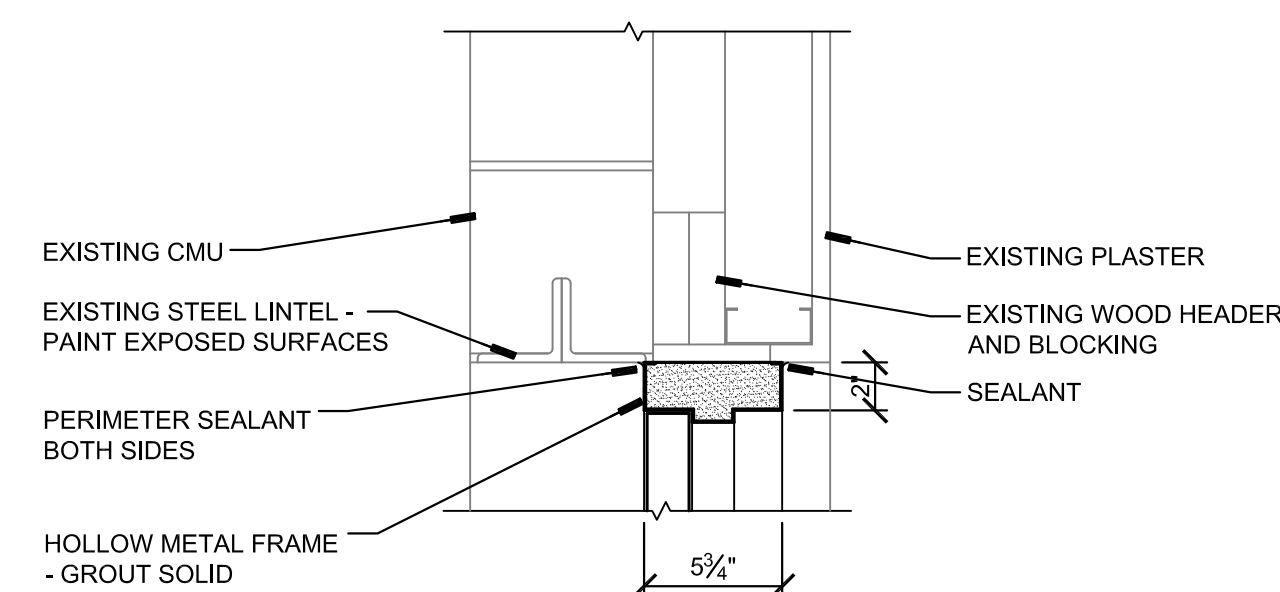
H3 HEAD DETAIL
SCALE: 1-1/2"=1'-0"



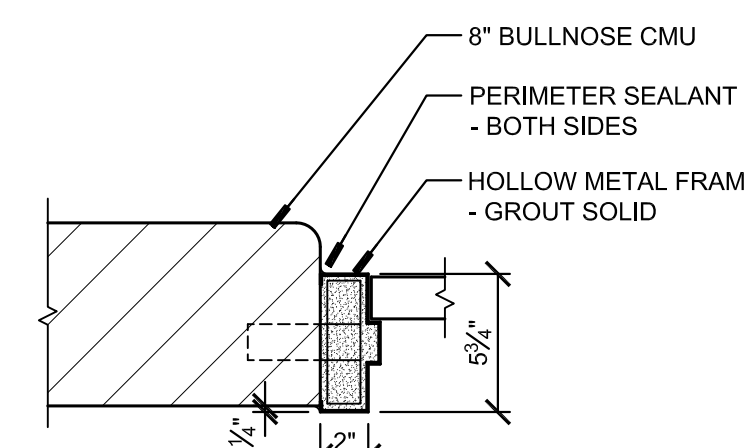
H4 HEAD DETAIL
SCALE: 1-1/2"=1'-0"



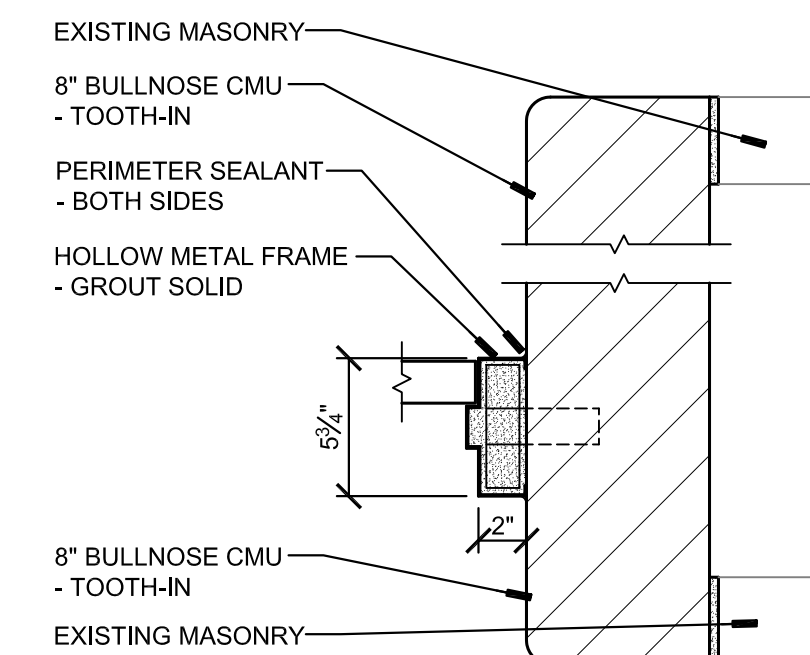
H5 HEAD DETAIL
SCALE: 1-1/2"=1'-0"



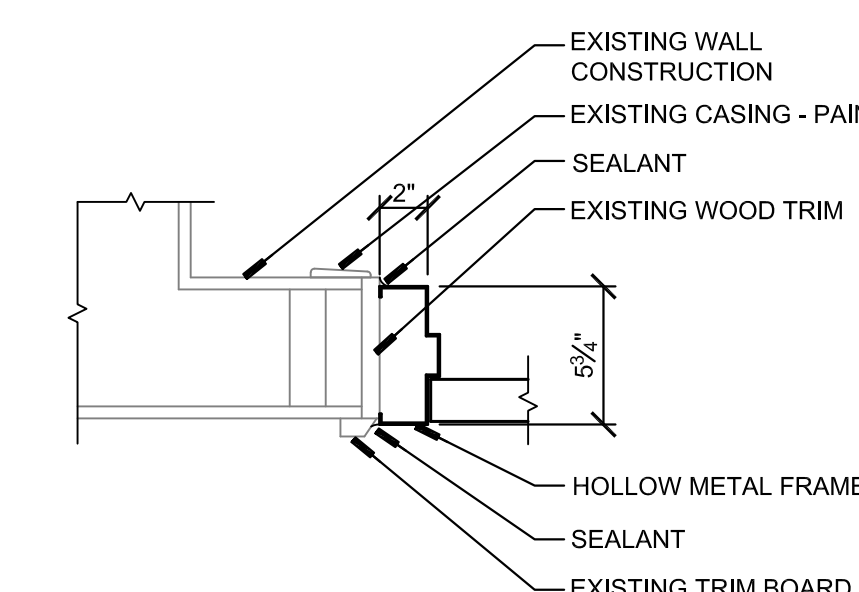
H6 HEAD DETAIL
SCALE: 1-1/2"=1'-0"



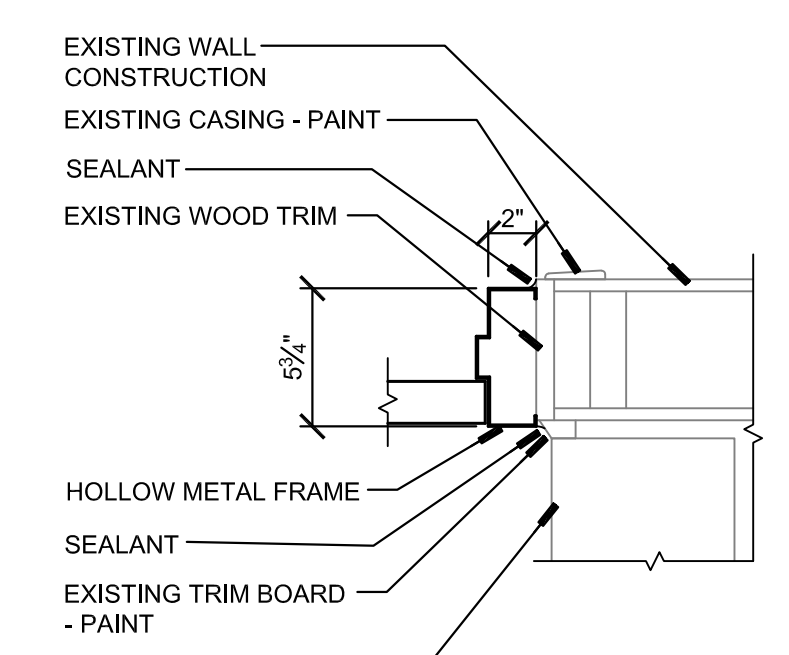
J1 JAMB DETAIL
SCALE: 1-1/2"=1'-0"



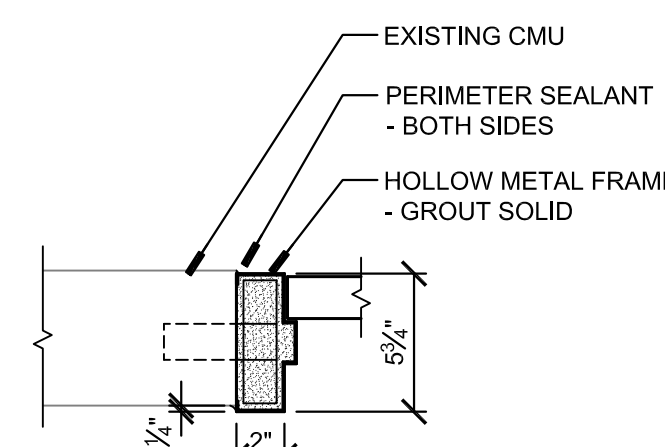
J2 JAMB DETAIL
SCALE: 1-1/2"=1'-0"



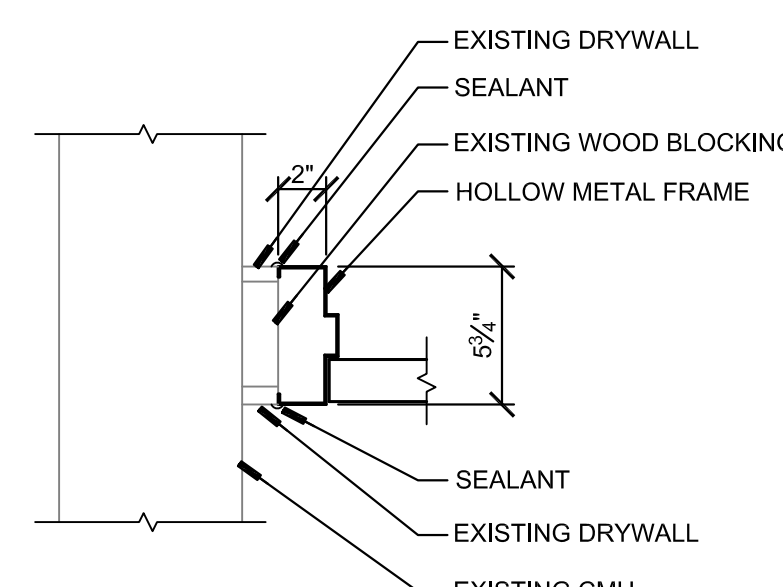
J3 JAMB DETAIL
SCALE: 1-1/2"=1'-0"



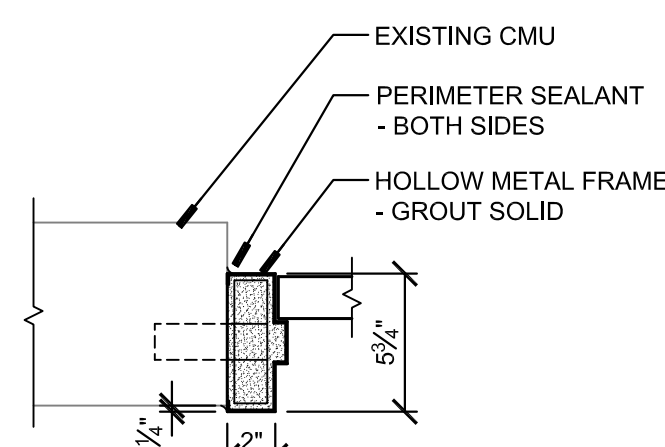
J4 JAMB DETAIL
SCALE: 1-1/2"=1'-0"



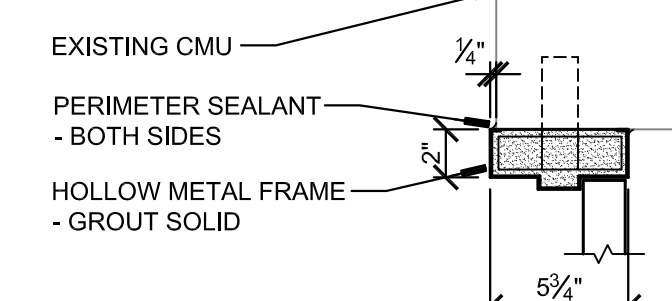
J5 JAMB DETAIL
SCALE: 1-1/2"=1'-0"



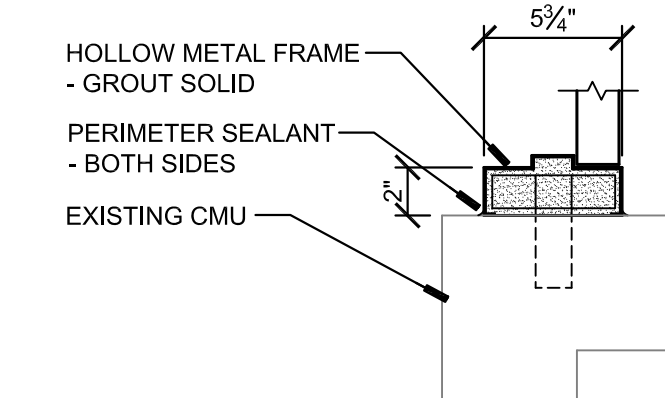
J6 JAMB DETAIL
SCALE: 1-1/2"=1'-0"



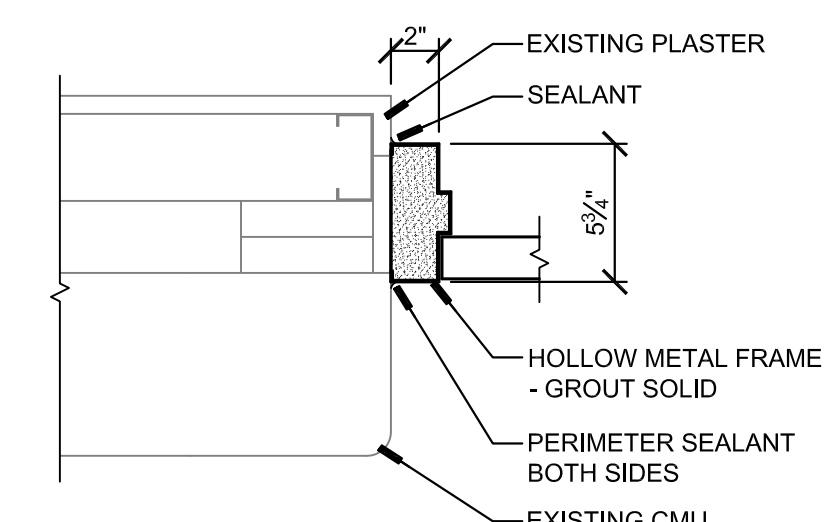
J7 JAMB DETAIL
SCALE: 1-1/2"=1'-0"



J8 JAMB DETAIL
SCALE: 1-1/2"=1'-0"



J9 JAMB DETAIL
SCALE: 1-1/2"=1'-0"



J10 JAMB DETAIL
SCALE: 1-1/2"=1'-0"