

WAYNE ELEMENTARY SCHOOL NEWSLETTER

FEBRUARY 16, 2024

DEAR FAMILIES, WE MADE IT TO FEBRUARY VACATION WEEK! WE HAD A 100 TH DAY AND VALENTINE DAY CELEBRATION, WE CELEBRATED BEING ROCK STARS WITH A PHOTO BOOTH (PICTURES TO COME..) AND WE NOW ARE OFFERING SNOW SHOES TO BORROW SO YOUR KIDDOS CAN GET OUT AND ENJOY NATURE AND THE OUTDOORS WHILE WE STILL HAVE SNOW ON THE GROUND! BE SAFE AND HOPE YOU ALL HAVE A RESTFUL VACATION!

Weekly Menu

WEEK OF 02/26/2024

MON- POPCORN CHICKEN W/ POTATO STARS

TUES-BBQ PULLED PORK W/ CORNBREAD

WED- CHEESE LASAGNA

THURS-TERIYAKI CHICKEN W/ VEGGIES

FRI- PIZZA PIZZA

SUN BUTTER & JELLY
AVAILABLE DAILY

Upcoming Dates

LOOKING AHEAD

FEBRUARY

02/19-02/23/24-VACATION WEEK

MARCH

03/01-03/31-YOUTH ART MONTH

03/05- LADD CENTER CLOSED FOR VOTING

03/07-PARENT/TEACHER CONFERENCES

03/13-1ST & 5TH FIELD TRIP TO KENNEBEC

VALLEY HUMANE SOCIETY

03/20- EARLY RELEASE

03/21-PARENT/TEACHER CONFERENCES

Weekly attendance

94%

REMINDERS

PLEASE CHECK LUNCH
BALANCES

SNACKS & WATER BOTTLE

SNEAKERS FOR GYM

WARM CLOTHING FOR RECESS

PRINCIPAL NOTES

Dear Families,

With winter break here, we wanted to provide you with some fun, easy, and free outdoor craft ideas to keep the kids entertained over the time off from school. Getting outdoors for some fresh air and creativity can be a nice change of pace during the colder months.



Snow Painting

Let the kids create colorful designs in the snow with squirt bottles or spray bottles filled with colored water. They can make patterns, pictures, and designs. The "paint" will temporarily color the snow.



Ice Sun Catchers

Fill plastic containers or aluminum pie pans with water. Add some berries, leaves, glitter, beads, or other small items, and let them freeze. Place the ice blocks outside your window and let the kids enjoy the colors and textures as the sunlight streams through their ice sculptures.



Snow Volcanoes

Help kids pile up snow into a mound shape and dig out the center. Have them gently pour a mixture of baking soda, vinegar, and red food coloring into the top so it oozes down the sides, looking like lava. The chemical reaction will cause a fizzing effect.



Nature Tree Decorations

Gather items like pinecones, acorns, twigs, bark, dried seed pods, nuts, and leaves. Bring string or yarn outside and let kids create mini nature wreaths, garlands, and ornaments to hang on trees.

We hope these ideas inspire kids of all ages to embrace the winter weather through creativity and hands-on fun. Click on the craft heading for more information on each of these ideas! Let us know if you try any of the projects or come up with new ones to share! Pictures can always be sent via SeeSaw or email and we will highlight them in the next newsletter!

Enjoy the break!

Jeanette Jacobs



SNOW SHOE RENTAL: PARENTAL CONSENT FORM

DEAR PARENT OR GUARDIAN,

OUR SCHOOL HAS A LIMITED NUMBER OF CHILD-SIZED SNOWSHOE SETS AVAILABLE FOR STUDENTS TO BORROW AND USE OVER WINTER BREAK. SNOWSHOEING IS A FUN WAY FOR FAMILIES TO STAY ACTIVE OUTDOORS DURING THE WINTER MONTHS.

IF YOU WOULD LIKE YOUR CHILD TO BORROW A PAIR OF SNOWSHOES, PLEASE REVIEW AND SIGN THIS RENTAL AGREEMENT FORM AND RETURN IT TO THE SCHOOL OFFICE.

SNOWSHOE RENTAL AGREEMENT

I, _____ GRANT MY CHILD _____ PERMISSION TO BORROW A SET
[PARENT/GUARDIAN NAME] [CHILD'S NAME]
OF SNOWSHOES.

I AGREE TO THE FOLLOWING TERMS:

- I WILL MAKE SURE THE SNOWSHOES ARE USED PROPERLY AND CARED FOR WHILE IN MY TEMPORARY POSSESSION.
- I AGREE TO RETURN THE SNOWSHOES IN THE SAME CONDITION AS WHEN BORROWED AND WILL COVER THE REPLACEMENT COST IF ANY DAMAGE OR LOSS OCCURS.
- I UNDERSTAND PROPER SNOWSHOE USE AND ASSOCIATED RISKS AND WILL REVIEW SAFETY RULES WITH MY CHILD. I AGREE THAT THE SCHOOL IS NOT LIABLE FOR ANY INJURIES RESULTING FROM THE USE OF BORROWED EQUIPMENT.
- I UNDERSTAND THIS EQUIPMENT IS LENT AS A COURTESY AND THE SCHOOL MAY CHOOSE TO MODIFY OR SUSPEND THE PROGRAM AT ANY TIME.

PLEASE SIGN AND DATE BELOW TO INDICATE YOU HAVE READ AND AGREE TO THESE TERMS. LET ME KNOW IF YOU HAVE ANY OTHER QUESTIONS!

PARENT/GUARDIAN SIGNATURE: _____

DATE: _____



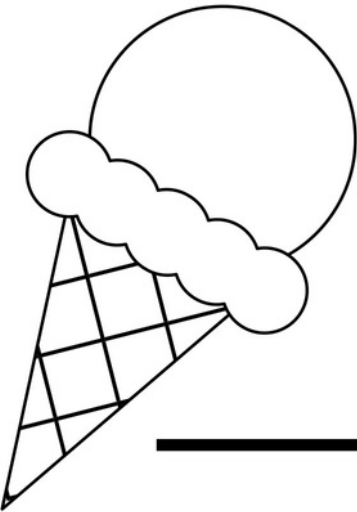
WEEKLY RIDDLE

I'M LIGHT AS A FEATHER,
BUT NOT EVEN THE
STRONGEST PERSON CAN
HOLD ME FOR MORE THAN
5 MINUTES. WHAT AM I?



THANK YOU FOR SHARING YOUR ART
WITH US FOR YOUTH ART MONTH!

ICE CREAM FOR YOUNG ARTISTS

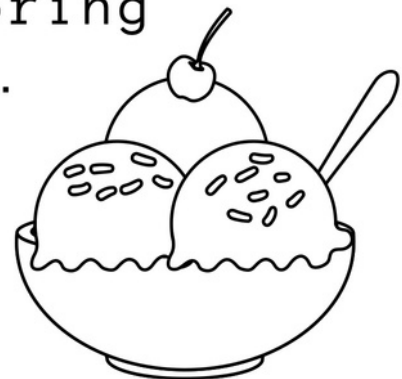


BRING YOUR FAMILY TO SEE
YOUR ART DISPLAYED IN OUR
"YOUTH ART GALLERY"
SATURDAY, MARCH 23
1 P.M. TO 2 P.M.

All children will enjoy free ice
cream sandwiches. Celebrate your
first gallery show, then bring
your art home with you.



Stained Glass Express
966 Western Ave
Manchester, Maine







Maranacook Elementary

Physical Education

Back from the holidays and we have wrapped up our Basketball unit and are moving onto our Gymnastics and Ninja Warrior training. For the next few weeks we will spend a lot of time in our socks on the gymnastics mats, however, we will still need sneakers for the many different activities we will be doing.

Students will learn how to balance, travel and roll in many different ways and even get a chance to create their own routine combining all the new moves. The Ninja Warriors will get to test their agility as they navigate through different obstacles and master the art of landing on their feet through all the challenges.



Mr. Lajoie PE Days:

Mon: Readfield

Tue: Wayne

Wed: Manchester

Thurs: Manchester

Fri: Readfield

Email: matt_lajoie@maranacook.com

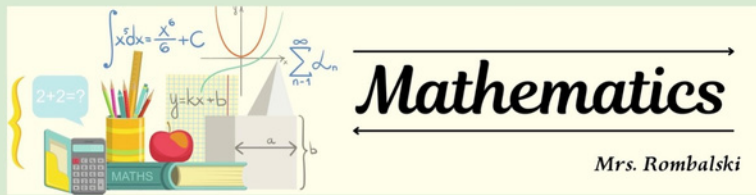
SHOE CORNER

Cold weather means winter boots and warm gear for an active outdoor recess. It also means an **extra pair** of **sneakers** for gym class and all indoor activities.

Boots are better than crocs but still not the right gear for gym class. A wet and dirty gym floor is slippery and unsafe. Help me keep the children safe and active by sending them with sneakers.

100 TH DAY





How do you solve multiplication problems?

When many adults were in school, we were taught to solve multiplication problems using the standard algorithm. This involves multiplying each place value by each other and then adding the answers. This is the method we learned and it is what we are most comfortable using.

$$\begin{array}{r}
 124 \times 26 = \\
 \begin{array}{r}
 1^1 2^2 4 \\
 \times 2 6 \\
 \hline
 7^1 4 4 \\
 + 2^1 4 0 \\
 \hline
 3 2 4
 \end{array}
 \end{array}$$

However, most schools are now teaching students to use partial products (at least to begin with). You may be asking what is a partial product? When we say partial products, we mean breaking down large numbers into parts to find their product easily.

Let's say you are asked to solve 2×4 . You can easily say that equals 8. But if you are asked to solve 12×34 , you may have to do some calculations. Partial product helps you multiply such numbers easily by breaking them into parts.

Here are the steps to follow when solving 12×34 using partial products:

Step 1: Expand or break the numbers into parts based on their place value:

$$12 = (10 + 2) \text{ and } 34 = (30 + 4)$$

Step 2: Multiply each part of the expanded form of a number with each part of the expanded form of the other number. Each part maintains its place.

$$(10 + 2) \times (30 + 4) =$$

Step 3: Calculate the products of the parts

$$(10 \times 30) + (10 \times 4) + (2 \times 30) + (2 \times 4) = 300 + 40 + 60 + 8 = 408$$

You may have seen your child solve this equation using partial products drawn in a box similar to the one shown below.

	30	4	
10	300	40	
2	60	8	
	360	+ 48	= 408

Although this method is unfamiliar to some adults, many students find success using this method when they first learn to multiply multi-digit numbers. Partial products help students better understand the math behind the procedures. This leads to stronger math skills in the long run, which is our ultimate goal! Give it a try, you may find you like it!

Local Library Events

Cary Memorial Library (Wayne)

- **Children's Story Time**-Every Monday at 10:00 am, Join in for a quick story or two, do a simple craft, play around the train table and meet new friends. Babies thru Preschool.

Underwood Memorial Library (Fayette)

Upcoming Storytime Night and Kid's Night 6:00-7:00 pm

- **February 7th**- We will be reading *Love, Splat* and making a Splat the Cat craft.
- **February 21st**- Creation Station at the library. Come on down and let your imagination run wild at The Creation Station! Make a castle, spaceship, dollhouse, dragon, whatever you can dream up! We have craft and recyclable materials for you to choose from. All you have to bring is your creativity!

Dr. Shaw Memorial Library (Mt. Vernon)

- **Bring your Child to the Library Day** is on **Sat Feb 3 from 12:30-2:30** Join us for sledding on the back field, hot cocoa and cookies. If snow is not suitable for sledding, come and create with legos, read stories, do a craft, socialize with others! (Please bring your own sled)

Readfield Community Library (Readfield)

- **STORY WALK®** at the **Readfield Community Library**-*A Mountain of Mittens* by Maine author Lynn Plourde. The walk begins on the trail behind the Library and goes about ¼ mile to the Readfield Union Meeting House. Please feel free to walk the StoryWalk® at any time that works for your family, regardless of whether the Library is open **OR** join us as we enjoy the February Story Walk (Library location) together, plus music and crafts!
~ **Saturday February 3rd at 2:00pm**
~ **Tuesday February 6th at 10:00am**
- **STORY WALK®** at **Readfield Elementary School**—*The Snow Dancer* by Addie Boswell. The RES Story Walk is located along the edge of the back soccer field behind the school.
- **TAKE YOUR CHILD to the LIBRARY DAY**—**Saturday, February 3rd.** Enjoy cookies, cocoa, crafts, music, and more from 10am-4pm! Also, we will host a group Story Walk event outdoors behind the Library at 2:00pm.
- **GAMES, PUZZLES, and LEGOs**—**Wednesday, February 21st.** Stop by the Library on Wednesday, February 21st from 3-5pm for fun with puzzles, games, and LEGOs! All materials and snacks provided.

READFIELD REC

YOUTH BASEBALL & SOFTBALL



THE SUCCESS OF OUR
YOUTH SPORTS DEPEND
ENTIRELY ON OUR
COMMUNITY SUPPORT,
PLEASE CONSIDER
COACHING

ROOKIE LEAGUE

Baseball/Softball
AGES 7-8 \$60

MINOR LEAGUE

Baseball/Softball
AGES 9-10 \$75

MAJOR LEAGUE

Baseball/Softball
AGES 11-12 \$75

Evaluations will be held 03/09/2024 - Details TBD

T-Ball (Co-Ed) \$35/child

Register online or at the Readfield Town Office by
03/08/2024 to avoid a \$10 late fee

Questions/Concerns? Contact Readfield Rec Department Email: readfieldreccom@gmail.com
or Matt Lajoie, Baseball Commissioner, (207)592-1398

Helpful Tips for Parents



Preparing for a Parent-Teacher-Student Conference

To be sure you go away from a parent-teacher-student conference with all of the information you want, consider the following suggestions:

Make a list of questions to ask the teachers.

This is your chance to ask questions of your child's teacher. Take time before the conference to make a list of questions that you want answered.

Talk with your child before the conference.

Discuss what your child has been learning. Find out about recent class activities. See if your child has questions for you to ask the teacher. Is anything bothering your child that the teacher should know about?

Be ready to pass on some "good news" to the teacher.

Teachers need and deserve good news. Be ready to let the teacher know when your child has reported good news from school. Remember the special help from the teacher, the words of encouragement, the topics that interested your child.

Talk openly and honestly.

Share your frustrations and successes regarding your child's schooling and home life. A better understanding of your child's concerns and priorities can help a teacher in relating to your child.

Identify ways you can best help your child.

Talk to the teacher about ways you can help your child at home. Maybe it's providing a regular time and place for study. Maybe it's talking more with your child about school or listening to your child read aloud. Ask the teacher for suggestions.

View your child through the teacher's eyes.

Some children behave differently in school than at home. Use the conference as a way to learn more about your child, and to help the teacher understand more about him/her, too.

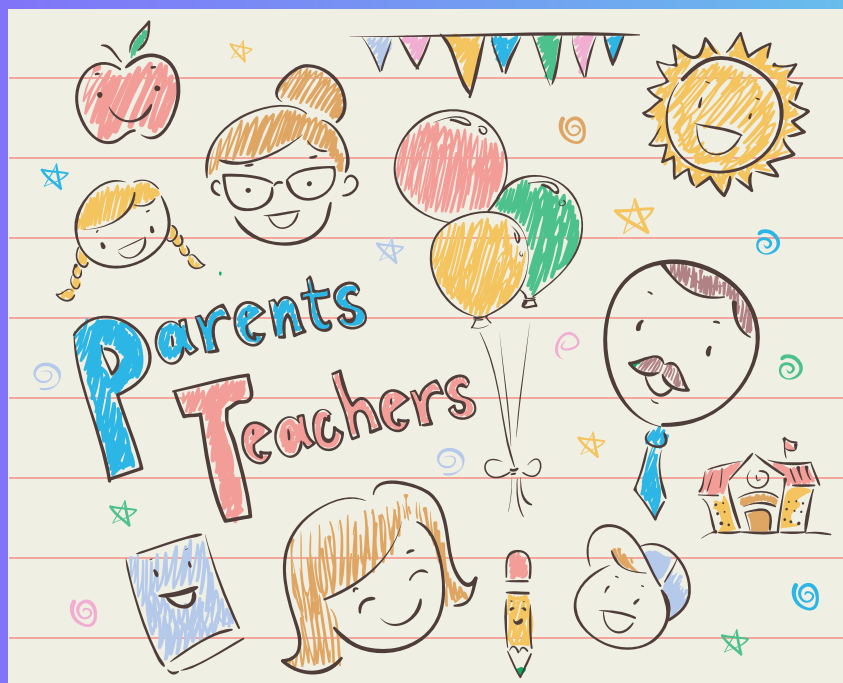
Express your concerns.

Don't be afraid to express your concerns about your child's performance, the classroom environment, peer pressure, or any other area that may be affecting your child's education.

IT'S PARENT /TEACHER CONFERENCE TIME

TO SCHEDULE YOUR CONFERENCE
[CLICK HERE](#)

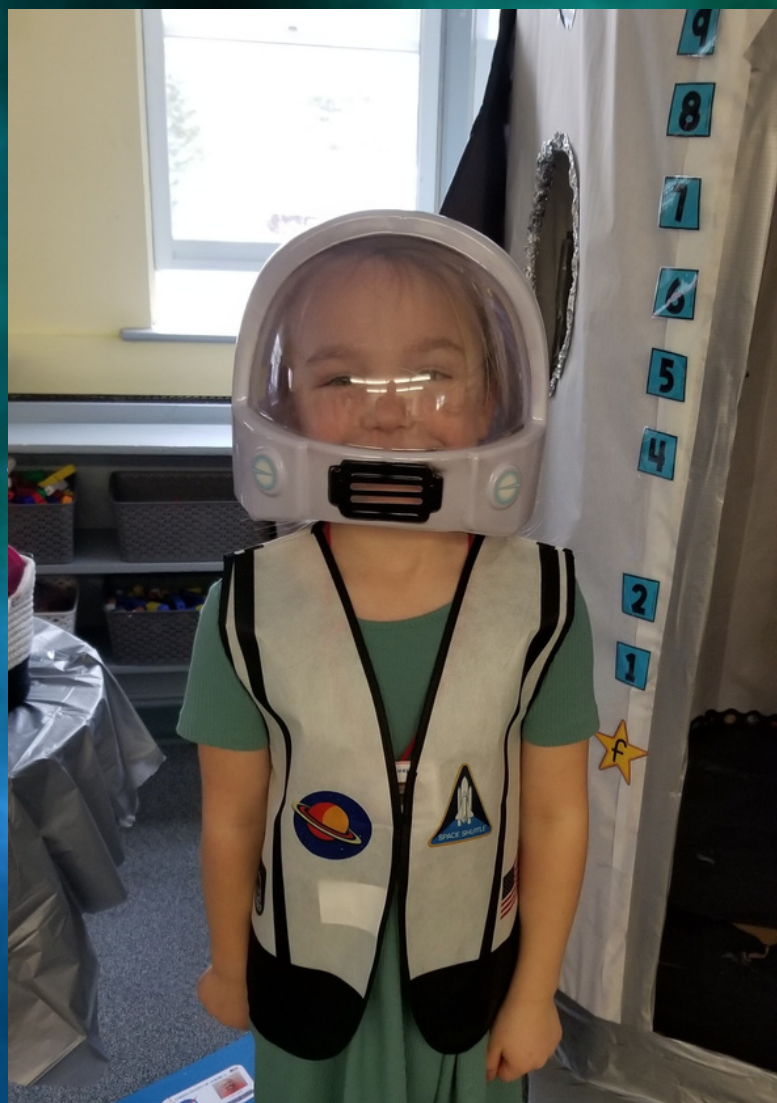
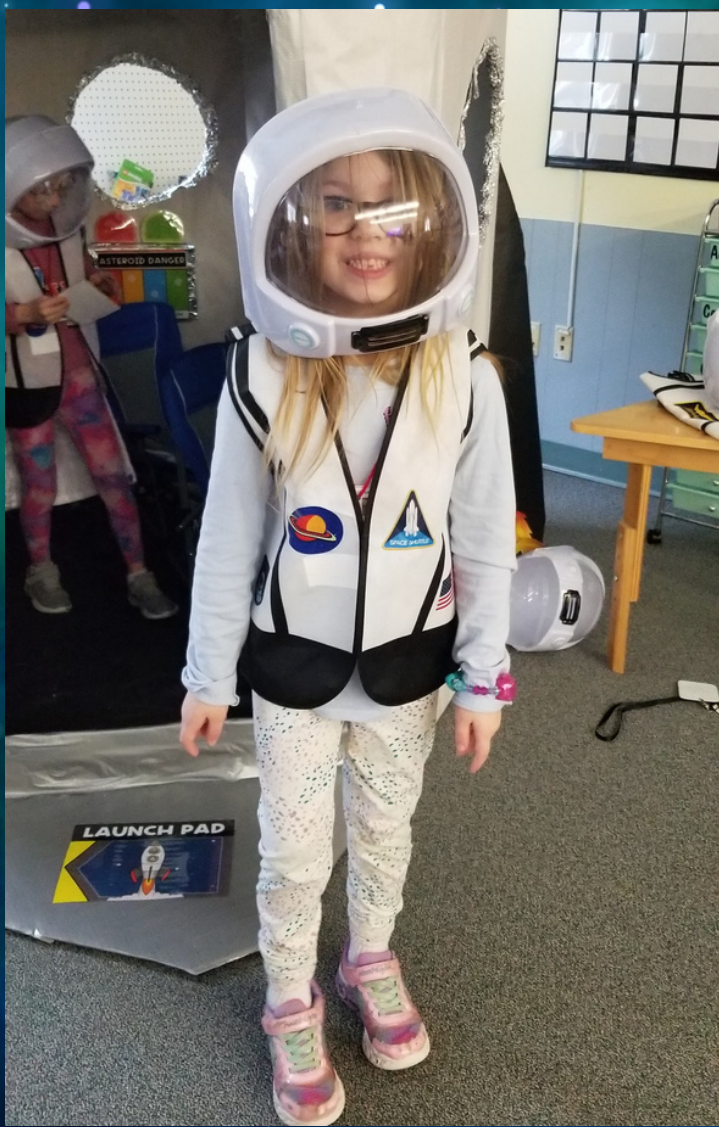
DATES THIS YEAR ARE
MARCH 7TH AND 21ST

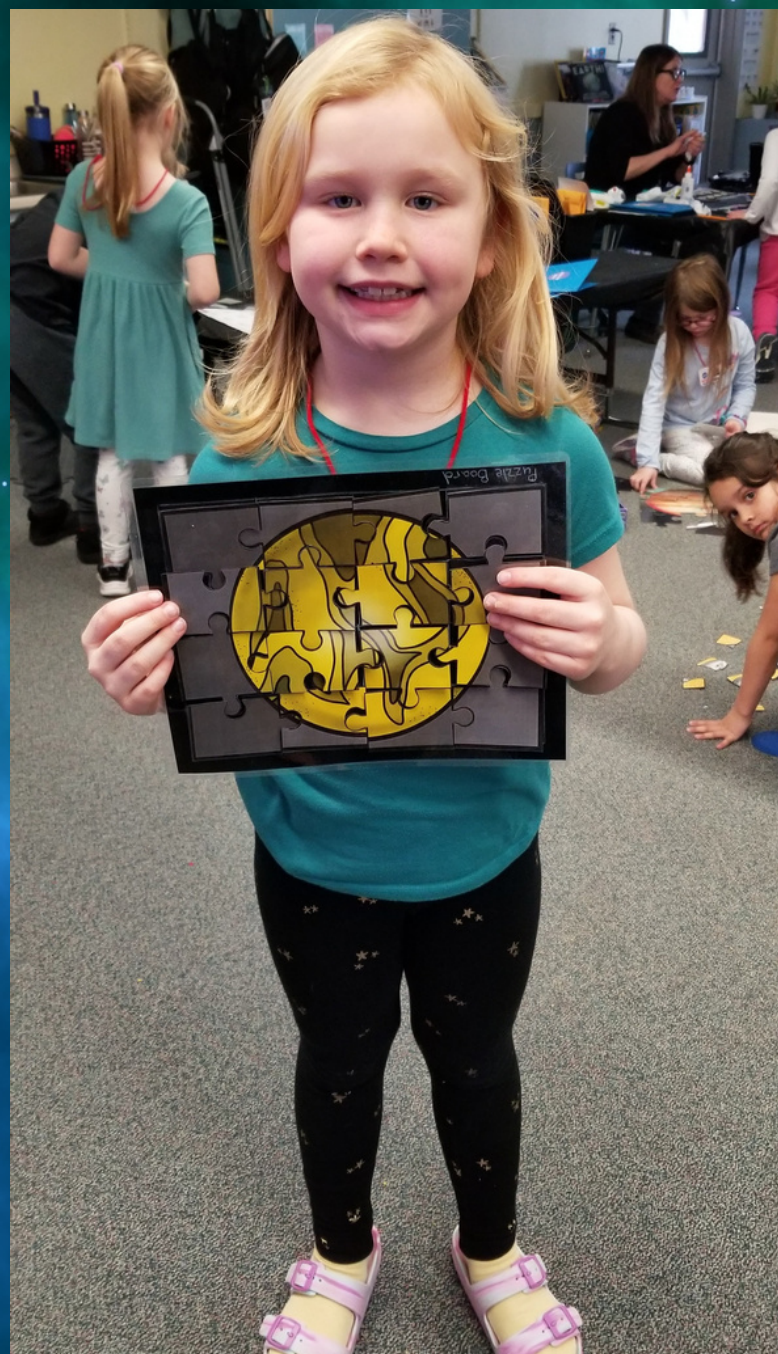


1st Grade

OUR SEGMENT ON PLANETS TOOK
US TO OUTER SPACE!







RIDDLE ANSWER

BREATH!



COMBATTING CHRONIC ABSENTEEISM

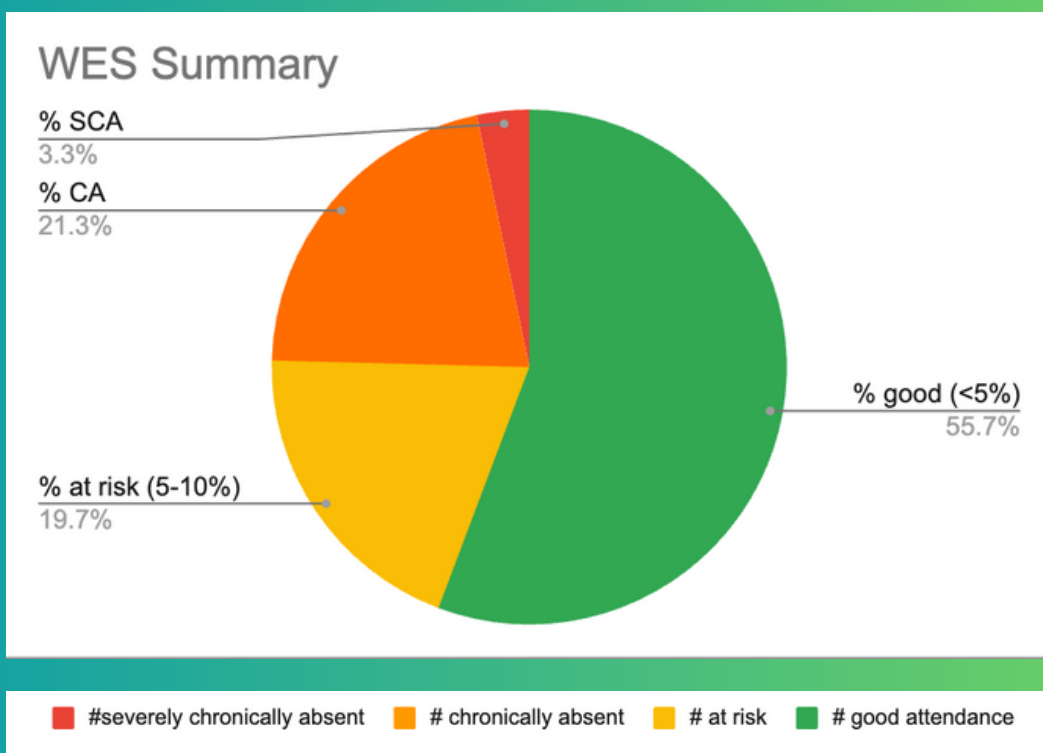
As we strive to improve student attendance, we want you aware that our district now generates monthly chronic absenteeism letters. If your child has an absence rate at or above 10%, you can expect to receive one of these letters. This district-wide initiative is aimed at addressing high absenteeism early on.

Getting students to school each day is so critical for their learning and success. We understand there may be valid reasons for some absences, but missing too much school can cause students to fall behind. If you receive one of these chronic absenteeism letters, please know it is not meant as punishment. We simply want to partner with you to identify any barriers to attendance and provide support. Our goal is to ensure all students are in class and engaged in learning to their fullest potential.

Please reach out to us if you have any questions or concerns about the letter. We are happy to discuss your child's particular circumstances and attendance needs. Working together, we can make progress on this important issue.

Thank you for your commitment to your child's education. We appreciate your efforts to get them to school each and every day.

WHERE DOES YOUR CHILD FALL?



REMOTE LEARNING!

In the event of inclement weather, our school may implement a remote learning day instead of a traditional snow day. On these remote days, students will be assigned work via our online platform, SeeSaw, and may be provided work in paper format to take home as well. Parents will receive advance notice if a remote day is scheduled and students should bring home any materials needed to complete assignments. If students experience technology issues like power outages that prevent them from finishing work, parents should contact their child's teacher to make arrangements.

The goal of remote learning is to provide students consistency with their learning while keeping everyone safe on hazardous weather days. By communicating with teachers and making contingency plans, we can make remote days a smooth transition from the traditional snow day. Families can use the sample schedule below to structure remote learning, but how you choose to complete the activities are up to you.

Please reach out with any questions or concerns. You may contact the office (207-685-3634) or your child's classroom teacher.

RSU38 Remote Learning Opportunity Grade Pre-K to 5		
Objective: These are activities that students can complete independently to maintain skills learned in school.		
Sample schedule		Important information
Suggested Time Frames	What are you going to learn today?	<ul style="list-style-type: none">• Don't hesitate to contact your classroom teacher by email with questions.• Set goals: setting daily goals for what your child will accomplish can help to make tasks meaningful and build confidence for students.
15 min - 30 mins per day math activity	<ul style="list-style-type: none">❖ We strongly suggest you establish a routine for example 2 to 3 learning activities in the morning and 2 to 3 learning activities in the afternoon. (Whatever fits your situation.)❖ Students should be doing a variety of learning tasks. Use the websites, menus, or resource packet to find something interesting to learn in each category.❖ This is a suggested time-frame. Your child may do more or less depending on what's appropriate for them!	
15 min - 30 mins per day Reading together		
15 - 30 mins per day Writing		
15 - 30 mins per day movement activity		
Choose 1 of the following areas to do each day: music, art, science, or social studies 15 - 30 mins		
Optional activities 15 - 30 mins	Choose an activity from the menu or have your child explore a topic of their interest.	

REVISED – RSU #38 2023 – 2024 SCHOOL CALENDAR – REVISED

2023

2024

H - SCHOOL HOLIDAYS

JULY

S	M	T	W	T	F	S
						1
2	3	H	5	6	7	8
9	10	11	12	13	14	15
16	17	18	19	20	21	22
23	24	25	26	27	28	29
30	31					

JANUARY

S	M	T	W	T	F	S
	H	2	3	4	5	6
7	8	9	10	11	12	13
14	H	16	17	18	19	20
21	22	23	24	25	26	27
28	29	30	31			

AUGUST

S	M	T	W	T	F	S
		1	2	3	4	5
6	7	8	9	10	11	12
13	14	15	16	17	18	19
20	21	22	23	24	25	26
27	W	W	F1	F2		

FEBRUARY

S	M	T	W	T	F	S
				1	2	3
4	5	6	7	8	9	10
11	12	13	14	15	16	17
18	H	V	V	V	V	24
25	26	27	28	29		

SEPTEMBER

S	M	T	W	T	F	S
					1	2
3	H	F3	6	7	8	9
10	11	12	13	14	15	16
17	18	19	20	21	22	23
24	25	26	ER	28	29	30

MARCH

S	M	T	W	T	F	S
					1	2
3	4	5	6	7	8	9
10	11	12	13	14	15	16
17	18	19	ER	21	22	23
24	25	26	27	28	29	30
31						

OCTOBER

S	M	T	W	T	F	S
1	2	3	4	5	W	7
8	H	10	11	12	13	14
15	16	17	18	19	20	21
22	23	24	25	26	27	28
29	30	31				

APRIL

S	M	T	W	T	F	S
	1	2	3	4	5	6
7	8	9	10	11	WI	13
14	H	V	V	V	V	20
21	22	23	24	25	26	27
28	29	30				

NOVEMBER

S	M	T	W	T	F	S
		1	2	3	4	
5	6	7	ER	9	H	11
12	13	14	15	16	17	18
19	20	21	WI	H	V	25
26	27	28	29	30		

MAY

S	M	T	W	T	F	S
		1	2	3	4	
5	6	7	8	9	10	11
12	13	14	15	16	17	18
19	20	21	22	23	24	25
26	H	28	29	30	31	

DECEMBER

S	M	T	W	T	F	S
					1	2
3	4	5	6	7	8	9
10	11	12	13	14	15	16
17	18	19	20	ER	V	23
24	H	V	V	V	V	30
31						

JUNE

S	M	T	W	T	F	S
						1
2	3	G	5	6	7	8
9	10	L	W	13	14	15
16	17	18	H	20	21	22
23	24	25	26	27	28	29
30						

July 4	-	Independence Day
September 4	-	Labor Day
October 9	-	Indigenous Peoples' Day
November 10	-	Veterans' Day, Observed
November 23	-	Thanksgiving Day
December 25	-	Christmas Day
January 1	-	New Year's Day
January 15	-	Martin Luther King, Jr. Day
February 19	-	Presidents' Day
April 15	-	Patriots' Day
May 27	-	Memorial Day
June 19	-	Juneteenth

W	Staff In-Service (no school students)
F1	First student day, Grades K-5, 6, 9, 12
F2	First student day, Grades 7, 8, 10, 11, CATC
F3	First student day, Grade Pre-K
G	Graduation
WI	In-Service Comp Day (no school students)
ER	Designated Early Release Day (see below)
V	Vacation
L	Last Student Day (if 2 emergency days used) (1/2 day)
▲	Flex Day

Aug. 28, 29	Professional Days
Aug. 30	1 st Student Day, grades K-5, 6, 9, 12
Aug. 31	1 st Student Day, grades 7, 8, 10-11, CATC
Sept. 5	1 st Student Day, grade Pre-K
Oct. 6	Professional Day
Nov. 22	In-service Comp Day (no school)
Nov. 23-24	Thanksgiving Break
Dec. 22-Jan. 1	Winter Break
Feb. 19-23	February Break
April 12	In-service Comp Day (no school)
April 15-19	Spring Break
June 4	Graduation
June 11	Last student day (if 2 emer. days used) (1/2 day)

June 12 Last staff day (if 2 emer. days are used)
Note: This calendar includes 2 remote learning days and 2 emergency days.

182 teacher days; 175 student days
Calendar includes 2 emergency days

Designated Early Release Days (student dismissal at 11:40 a.m.; content to be determined by Professional Development Committee and A-Team). No Pre-K on early release days.

September 27
November 8
December 21
March 20

Adopted by RSU 38 Board: 06/07/23 (R1 06/21/23 corrected)
Revision Adopted: 01/03/24 (corrected 01/17/24)

HAVE A
SPECTACULAR
VACATION!



See you back on
Monday, 2/26!