

# WAYNE ELEMENTARY SCHOOL NEWSLETTER

JANUARY 05, 2024

DEAR FAMILIES, WE'VE HAD A GREAT WEEK HERE AT WES! WE ENDED THE WEEK WITH POPCORN AND A MOVIE! NEXT WEEK IS SURE TO BE SPECIAL TOO WITH THE CHILDREN'S MUSEUM VISITING ON TUESDAY! HAVE A WONDERFUL WEEKEND!

## Weekly Menu

### WEEK OF 01/08/2024

**MON-** PANCAKE WRAPPED SAUSAGE W/ HASH BROWN

**TUES-**CHICKEN & WAFFLES

**WED-**CHEESE RAVIOLI W/ GARLIC BREAD

**THURS-TOTS** SMOTHERED W/ CHEESE & BACON

**FRI-** PIZZA PIZZA

**SUN BUTTER & JELLY**

**AVAILABLE DAILY**

## Upcoming Dates

### LOOKING AHEAD

#### JANUARY

01/01/24-HOLIDAY

01/09/24-THE CHILDREN'S MUSEUM AT WES!!

01/11/24- HOME AND SCHOOL MEETING 6PM @ WES

01/15/24- HOLIDAY

01/23/24-EARLY RELEASE DAY

#### FEBRUARY

02/19-02/23/24-VACATION WEEK

*Weekly attendance*

**96%**

## REMINDERS

**PLEASE CHECK LUNCH  
BALANCES**

**SNACKS & WATER BOTTLE**

**SNEAKERS FOR GYM**

**WARM CLOTHING FOR RECESS**



Dear Families,


**Happy New Year! - Xīnnián hǎo! - Feliz año nuevo! - Nav varsh ki hardik shubhkamnaye! - Aam saiid!**

Welcome back from what I hope was a fun and relaxing winter break with family and friends. While breaks provide a chance to rest and recharge, January is also a critical time for learning. As students settle back into classroom routines, our teachers are actively focused on covering critical material. Second-trimester learning provides an essential foundation for future grades.

For the months of September through December, our attendance was 94%. As you might remember we are striving for 97% and I know that we can reach it!

If your child must be absent due to illness or appointments, please notify the office and talk with your child's teacher about makeup work. Students must attend school consistently, especially after an extended absence. Missed days in January mean students fall behind in building skills and miss out on learning alongside their peers. This month offers opportunities for strong academic growth that will benefit children for the remainder of the school year.







Throughout the month of January, we also wanted to let you know that we will be helping students start the year focused on their aspirations! If you would like to support these efforts at home, please look for upcoming topics in our newsletter around goal setting. We want to partner with families to get each student to maximize their growth potential!

Sincerely,   
Jeanette Jacobs  
WES Principal

Happy New Year

# NOTES FROM THE NURSE

## I NEED TO STAY HOME IF...

I HAVE A FEVER	I AM VOMITING	I HAVE DIARRHEA	I HAVE A RASH	I HAVE BEEN IN THE HOSPITAL	I HAVE TESTED COVID +
					
Temperature of 100.4 or higher	Within the past 24 hours	Within the past 24 hours	Body rash with itching or fever	Hospital stay and/or ER visit	5 Day isolation begins with Day 0 as symptom onset or + test if no symptoms

## I AM READY TO GO BACK TO SCHOOL WHEN I AM...

Fever free for 24 hours without the use of fever reducing medication (i.e. Tylenol, Motrin)	Free from vomiting for at least 2 solid meals	Free from diarrhea for at least 24 hours	Free from rash, itching, or fever. I have been evaluated by my doctor if needed	Released by my medical provider to return to school	End isolation if symptoms are improving and Fever free for 24 hours without the use of fever reducing medication (i.e. Tylenol, Motrin)
--	---	--	---	---	---

**DAILY HABITS FOR STAYING HEALTHY-**

**WASH HANDS**

**BEDTIME ROUTINES WITH PLENTY OF SLEEP**

**DRINK PLENTY OF WATER**

**3-5 SERVINGS OF FRUITS & VEGETABLES**

**FRESH AIR AND SUNSHINE**

**EXERCISE**



**WEEKLY**

**RIDDLE**

I am an odd number take away  
a letter and I am even,  
what number am I ??



# **REMOTE** **LEARNING!**

In the event of inclement weather, our school may implement a remote learning day instead of a traditional snow day. On these remote days, students will be assigned work via our online platform, SeeSaw, and may be provided work in paper format to take home as well. Parents will receive advance notice if a remote day is scheduled and students should bring home any materials needed to complete assignments. If students experience technology issues like power outages that prevent them from finishing work, parents should contact their child's teacher to make arrangements.

The goal of remote learning is to provide students consistency with their learning while keeping everyone safe on hazardous weather days. By communicating with teachers and making contingency plans, we can make remote days a smooth transition from the traditional snow day. Families can use the sample schedule below to structure remote learning, but how you choose to complete the activities are up to you.

Please reach out with any questions or concerns. You may contact the office (207-685-3634) or your child's classroom teacher.

RSU38 Remote Learning Opportunity Grade Pre-K to 5		
Objective: These are activities that students can complete independently to maintain skills learned in school.		
Sample schedule		Important information
Suggested Time Frames	What are you going to learn today?	<ul style="list-style-type: none"><li>• Don't hesitate to contact your classroom teacher by email with questions.</li><li>• Set goals: setting daily goals for what your child will accomplish can help to make tasks meaningful and build confidence for students.</li></ul>
15 min - 30 mins per day math activity	<ul style="list-style-type: none"><li>❖ We strongly suggest you establish a routine for example 2 to 3 learning activities in the morning and 2 to 3 learning activities in the afternoon. (Whatever fits your situation.)</li></ul>	
15 min - 30 mins per day Reading together		
15 - 30 mins per day Writing		
15 - 30 mins per day movement activity		
Choose 1 of the following areas to do each day: music, art, science, or social studies 15 - 30 mins	<ul style="list-style-type: none"><li>❖ Students should be doing a variety of learning tasks. Use the websites, menus, or resource packet to find something interesting to learn in each category.</li><li>❖ This is a suggested time-frame. Your child may do more or less depending on what's appropriate for them!</li></ul>	
Optional activities 15 - 30 mins	Choose an activity from the menu or have your child explore a topic of their interest.	

# SCHOOL *and Home*

**OUR NEXT SCHOOL AND HOME MEETING WILL BE THURSDAY,  
JANUARY 11TH AT 6PM IN THE SCHOOL LIBRARY.**

## **SCHOOL AND HOME NOTES:**

**WE ARE CURRENTLY WORKING ON TWO FUNDRAISING EVENTS FOR THE NEW YEAR:**

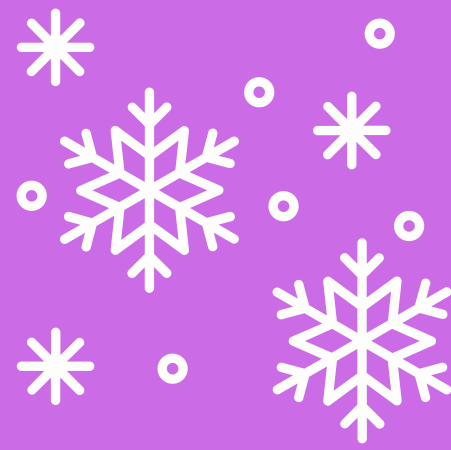
**- "PARENT'S NIGHT OUT" ON SATURDAY, MARCH 23, 2024 - SAVE THE DATE! MORE DETAILS TO  
COME!**

**- MAY DAY 5K, SCHEDULED FOR MAY 5, 2024. IF YOUR BUSINESS SPONSORED OUR RUN LAST YEAR  
AND WOULD LIKE TO DO SO AGAIN, OR WOULD LIKE TO BECOME A NEW SPONSOR, PLEASE CONTACT  
US AT [WAYNE.SCHOOL.HOME@GMAIL.COM](mailto:WAYNE.SCHOOL.HOME@GMAIL.COM). WE APPRECIATE YOUR SUPPORT!**

**- WE ARE PLANNING A DESIGN COMPETITION FOR OUR 5K SHIRTS - MORE DETAILS TO COME!**

**- OUR PIE FUNDRAISER RAISED \$665 FOR OUR SCHOOL! WE USED SOME OF THESE FUNDS TO HELP  
SUPPORT OUR TEACHERS WITH HOLIDAY FUN DURING THIS MONTH. WE WILL ALSO BE SPONSORING  
TEACHERS WITH THEIR CURRICULUM MATERIAL NEEDS.**

**WE HOPE YOU CAN JOIN US AT THE NEXT MEETING!!**



# **REMINDER**

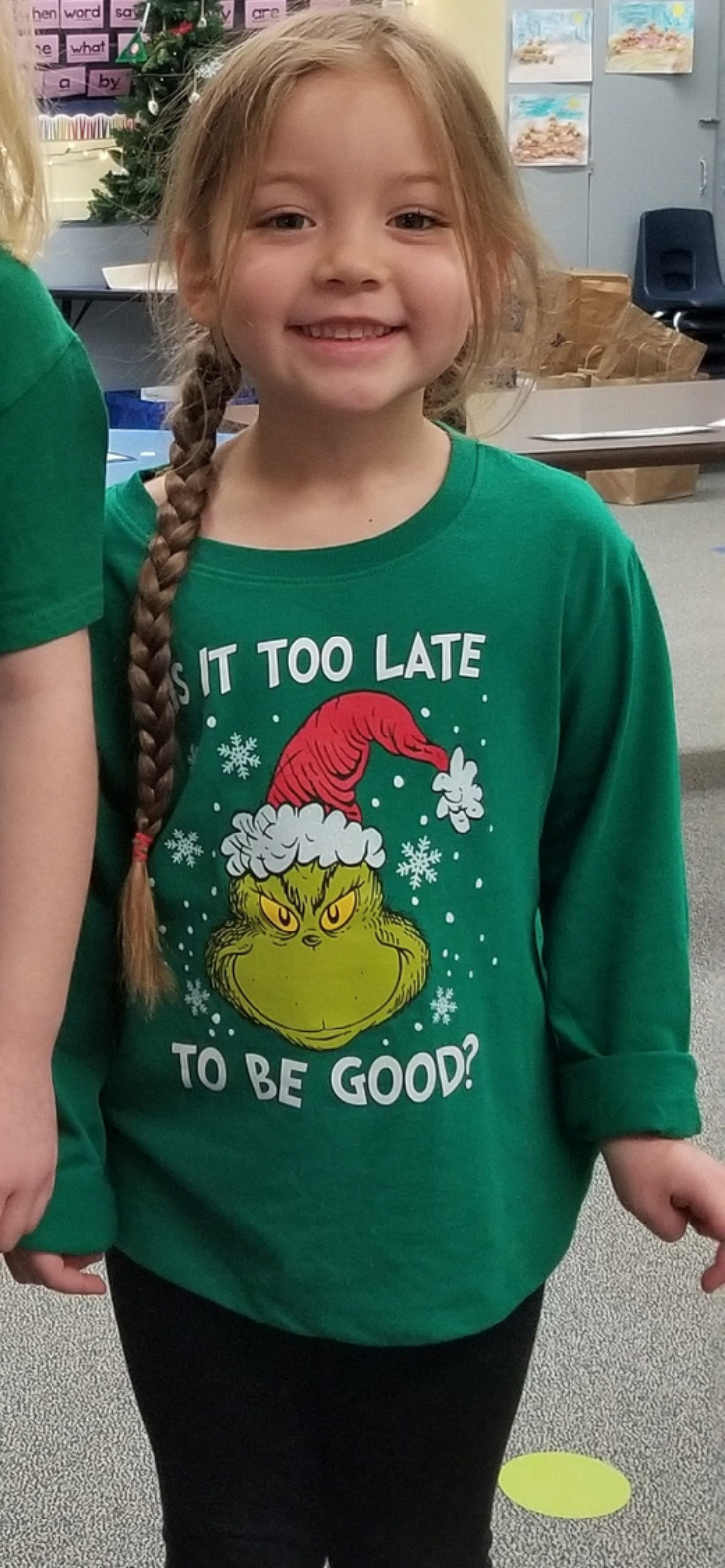
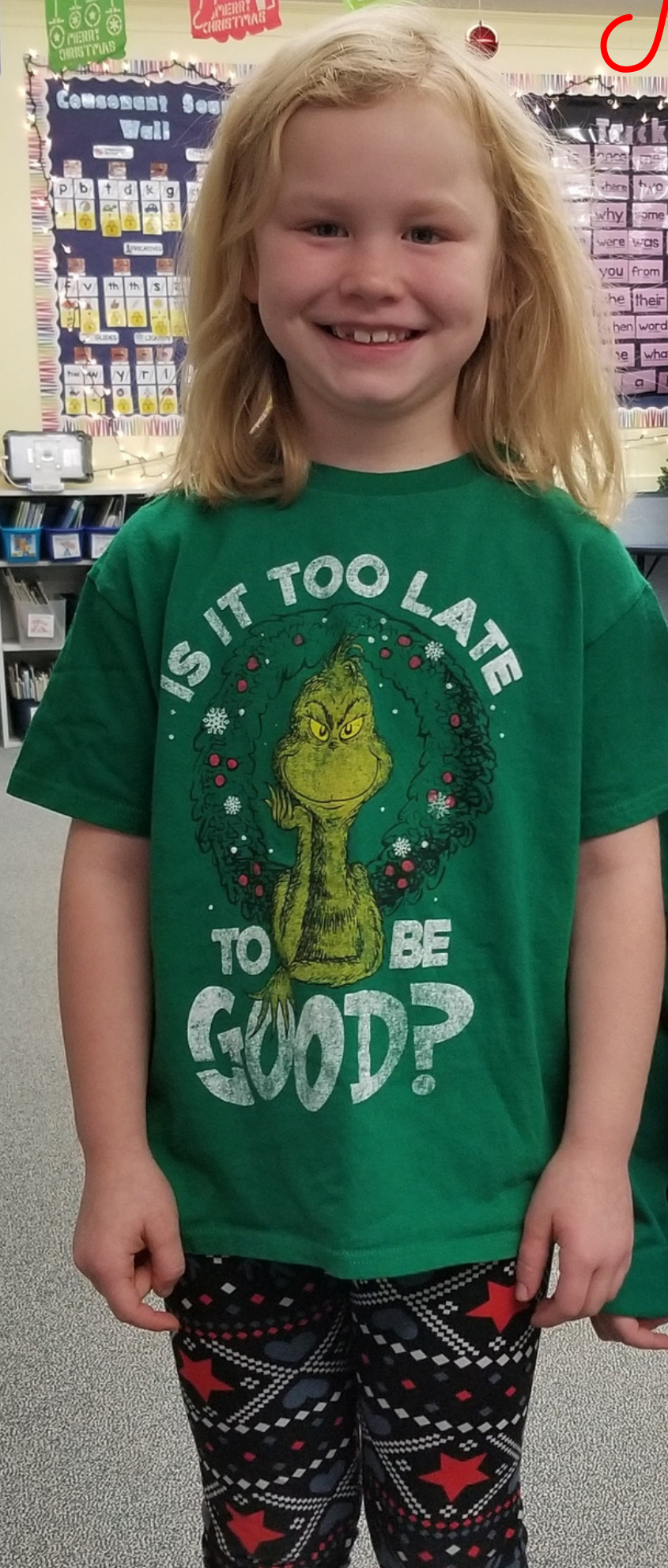
**WINTER WEATHER IS IN FULL SWING!  
IF YOU DIDN'T HAVE A CHANCE TO FILL  
OUT THE SURVEY FOR THE "BLIZZARD  
BAGGED LUNCH", LET ME KNOW AND I  
WILL ADD YOUR STUDENT TO THE LIST.  
A TAKE HOME LUNCH WILL BE SENT  
HOME THE DAY BEFORE A PREDICTED  
STORM IN PREPARATION FOR A  
REMOTE LEARNING DAY.**

**CALL 685-3634**



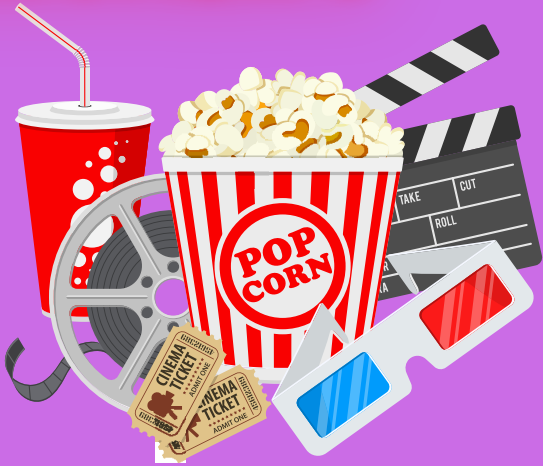


*Twinning*



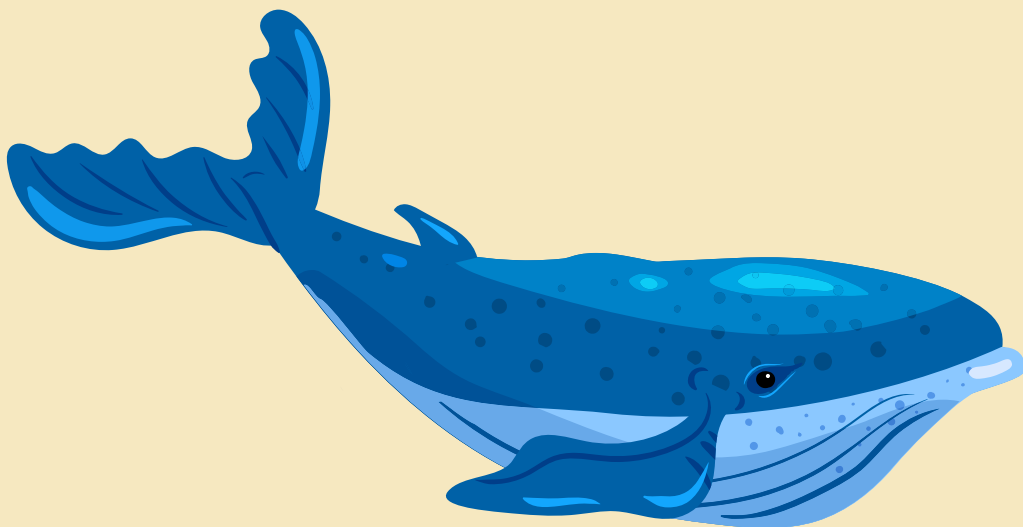


*Friday Fun!*  
NOW  
SHOWING



# The Children's Museum is coming to WES on January 9th!

**A WHALE'S TALE - OCEAN ECOSYSTEMS: THE KIDS WILL MEET A LIFE-SIZED INFLATABLE HUMPBACK WHALE NAMED PIANO. THEY'LL EXPLORE WHALE ANATOMY, TOUCH REAL WHALE ARTIFACTS, AND BECOME AN ECOLOGIST TO DISCOVER A WHALE'S ROLE IN THE OCEAN ECOSYSTEM. AS WE EXPLORE OCEAN ECOSYSTEMS, WE WILL LEARN MORE ABOUT THE REAL WHALE NAMED PIANO, AND DISCOVER HOW SHE INTERACTS WITH ANIMALS AND HUMANS.**





# RSU #38 2023 – 2024 SCHOOL CALENDAR

2023

2024

## H - SCHOOL HOLIDAYS

### JULY

S	M	T	W	T	F	S
						1
2	3	H	5	6	7	8
9	10	11	12	13	14	15
16	17	18	19	20	21	22
23	24	25	26	27	28	29
30	31					

### AUGUST

S	M	T	W	T	F	S
		1	2	3	4	5
6	7	8	9	10	11	12
13	14	15	16	17	18	19
20	21	22	23	24	25	26
27	W	W	F	F		

### SEPTEMBER

S	M	T	W	T	F	S
						1 2
3	H	F	3	6	7	8 9
10	11	12	13	14	15	16
17	18	19	20	21	22	23
24	25	26	ER	28	29	30

### OCTOBER

S	M	T	W	T	F	S
1	2	3	4	5	W	7
8	H	10	11	12	13	14
15	16	17	18	19	20	21
22	23	24	25	26	27	28
29	30	31				

### NOVEMBER

S	M	T	W	T	F	S
		1	2	3	4	
5	6	7	ER	9	H	11
12	13	14	15	16	17	18
19	20	21	WI	H	V	25
26	27	28	29	30		

### DECEMBER

S	M	T	W	T	F	S
						1 2
3	4	5	6	7	8	9
10	11	12	13	14	15	16
17	18	19	20	ER	V	23
24	H	V	V	V	V	30
31						

### JANUARY

S	M	T	W	T	F	S
		H	2	3	4	5 6
7	8	9	10	11	12	13
14	H	16	17	18	19	20
21	22	23	ER	25	26	27
28	29	30	31			

### FEBRUARY

S	M	T	W	T	F	S
						1 2 3
4	5	6	7	8	9	10
11	12	13	14	15	16	17
18	H	V	V	V	V	24
25	26	27	28	29		

### MARCH

S	M	T	W	T	F	S
						1 2
3	4	5	6	7	8	9
10	11	12	13	14	W	16
17	18	19	ER	21	22	23
24	25	26	27	28	29	30
31						

### APRIL

S	M	T	W	T	F	S
		1	2	3	4	5 6
7	8	9	10	11	WI	13
14	H	V	V	V	V	20
21	22	23	24	25	26	27
28	29	30				

### MAY

S	M	T	W	T	F	S
						1 2 3 4
5	6	7	ER	9	10	11
12	13	14	15	16	17	18
19	20	21	22	23	24	25
26	H	28	29	30	31	

### JUNE

S	M	T	W	T	F	S
						1
2	3	G	5	6	7	8
9	10	L	▲	13	14	15
16	17	18	H	20	21	22
23	24	25	26	27	28	29
30						

July 4	-	Independence Day
September 4	-	Labor Day
October 9	-	Indigenous Peoples' Day
November 10	-	Veterans' Day, Observed
November 23	-	Thanksgiving Day
December 25	-	Christmas Day
January 1	-	New Year's Day
January 15	-	Martin Luther King, Jr. Day
February 19	-	Presidents' Day
April 15	-	Patriots' Day
May 27	-	Memorial Day
June 19	-	Juneteenth

W	Staff In-Service (no school students)
F1	First student day, Grades K-5, 6, 9, 12
F2	First student day, Grades 7, 8, 10, 11, CATC
F3	First student day, Grade Pre-K
G	Graduation
WI	In-Service Comp Day (no school students)
ER	Designated Early Release Day (see below)
V	Vacation
L	Last Student Day (if 2 emergency days used) (1/2 day)
▲	Flex Day

Aug. 28, 29	Professional Days
Aug. 30	1 <sup>st</sup> Student Day, grades K-5, 6, 9, 12
Aug. 31	1 <sup>st</sup> Student Day, grades 7, 8, 10-11, CATC
Sept. 5	1 <sup>st</sup> Student Day, grade Pre-K
Oct. 6	Professional Day
Nov. 22	In-service Comp Day (no school)
Nov. 23-24	Thanksgiving Break
Dec. 22-Jan. 1	Winter Break
Feb. 19-23	February Break
March 15	Professional Day
April 12	In-service Comp Day (no school)
April 15-19	Spring Break
June 4	Graduation
June 11	Last student day (if 2 emer. days used) (1/2 day)
June 12	Last staff day (if 2 emer. days are used)
Note: This calendar includes 2 remote learning days and 2 emergency days.	

182 teacher days; 175 student days  
Calendar includes 2 emergency days

Designated Early Release Days (student dismissal at 11:40 a.m.; content to be determined by Professional Development Committee and A-Team). No Pre-K on early release days.

September 27	January 24
November 8	March 20
December 21	May 8

Adopted by RSU 38 Board: 06/07/23 (R1 06/21/23 corrected)

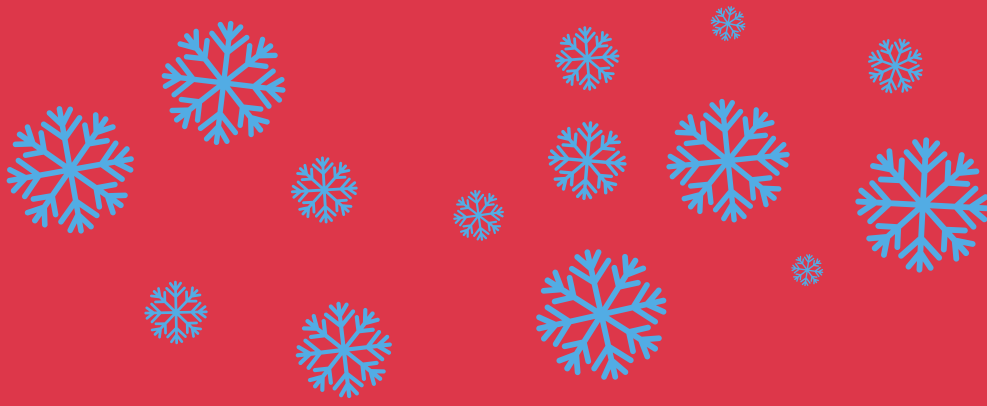


**RIDDLE**

**ANSWER**

**7**

**(S)EVEN**



***Have a  
Fantastic  
Weekend!!***

